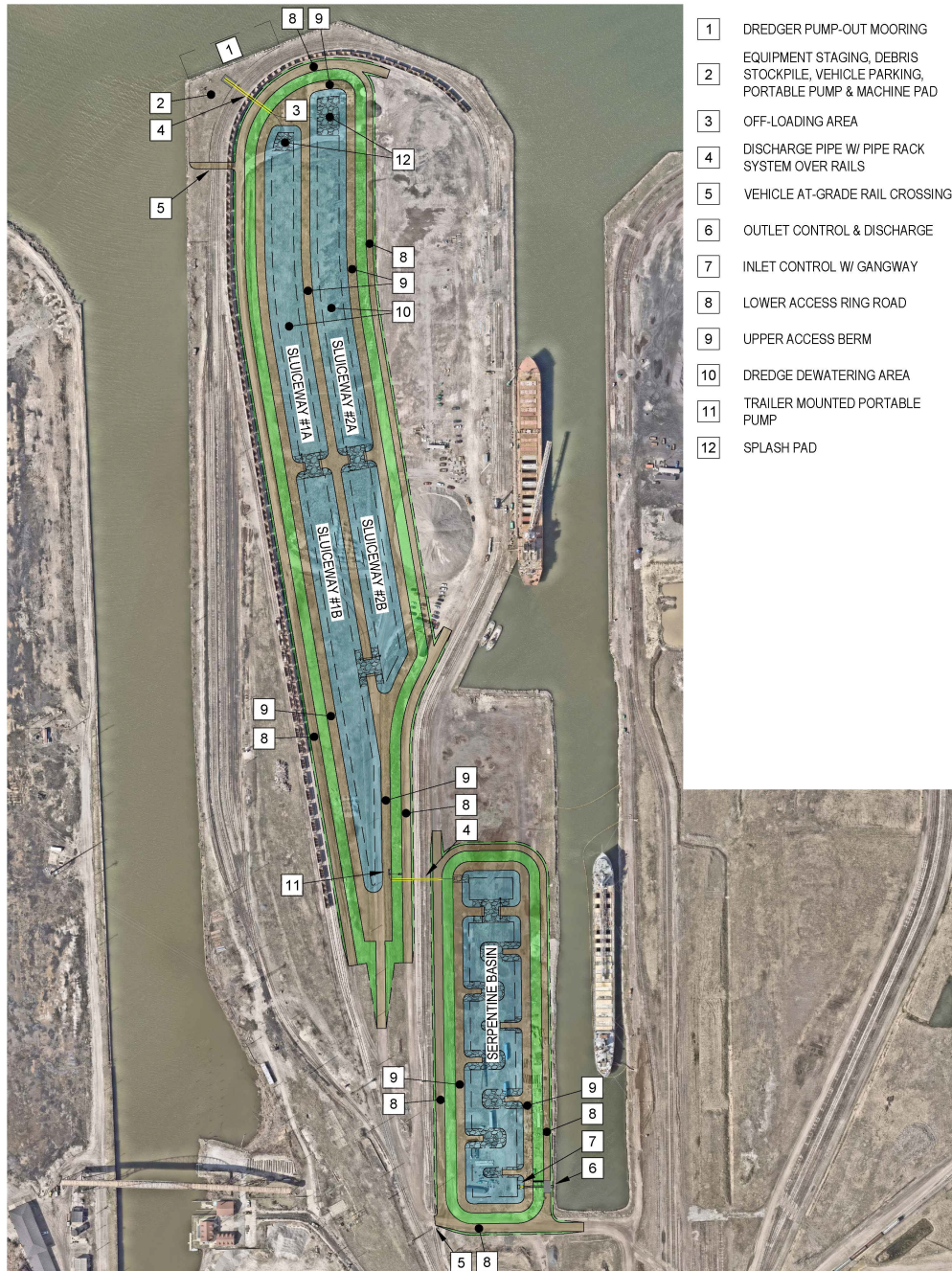


The Ashtabula City Port Authority, in partnership with the Ashtabula County Port Authority and Kinder Morgan, plans to seek funding through the Port Infrastructure Development Program (PIDP) grant to construct a Dredged Material Management Facility for Ashtabula Harbor. This facility will provide a long-term beneficial use solution for dredged sediments from the federal channel and private facilities that safeguards the future use of Ashtabula Harbor. To view the grant project plans or provide feedback, please contact the Ashtabula City Port Authority at pa@cityofashtabula.com.

Proposed Layout of the New Ashtabula Harbor Dredged Material Management Facility



- 1 DREDGER PUMP-OUT MOORING
- 2 EQUIPMENT STAGING, DEBRIS STOCKPILE, VEHICLE PARKING, PORTABLE PUMP & MACHINE PAD
- 3 OFF-LOADING AREA
- 4 DISCHARGE PIPE W/ PIPE RACK SYSTEM OVER RAILS
- 5 VEHICLE AT-GRADE RAIL CROSSING
- 6 OUTLET CONTROL & DISCHARGE
- 7 INLET CONTROL W/ GANGWAY
- 8 LOWER ACCESS RING ROAD
- 9 UPPER ACCESS BERM
- 10 DREDGE DEWATERING AREA
- 11 TRAILER MOUNTED PORTABLE PUMP
- 12 SPLASH PAD